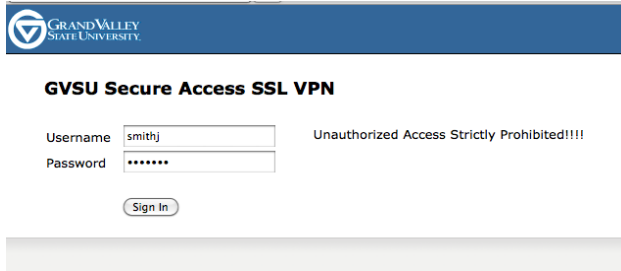


Accessing your private drive (N Drive) and the departmental data drive (L drive) from home.

Personal Home Machine (or GV owned computer) instructions: Access thru the VPN Web interface

Go to the following URL and login with your network ID and network password:
<http://vpn.gvsu.edu>



The screenshot shows the GVSU Secure Access SSL VPN login interface. At the top left is the Grand Valley State University logo. The title is "GVSU Secure Access SSL VPN". Below the title are two input fields: "Username" with the value "smithj" and "Password" with masked characters "*****". To the right of the password field is the text "Unauthorized Access Strictly Prohibited!!!!". Below the input fields is a "Sign In" button.

This will bring up a list of servers you have access to. Look for the following and click on it:

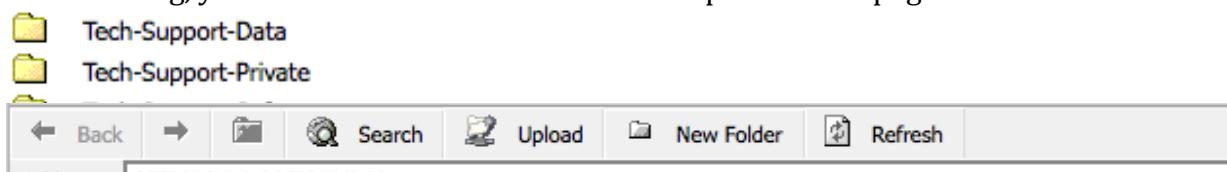


This will bring you to another login screen, where you will need to enter your network login name and password again:



The screenshot shows the "GVSU File Access" login screen. It has a "Log On" section with "User name:" and "Password:" labels, each followed by an input field. The "User name" field contains "smithj" and the "Password" field contains "*****". Below the input fields is a "Log On" button. Below the button is a security notice: "For security purposes, when you finish working with this site do one of the following: Click the Logoff button to log off from the site. Close all browser windows (including applications that are open in other windows)." Below the notice is a footer: "This site is intended for authorized users only. If you experience access problems contact the [Computing & Technology Support Helpdesk](#). © 2010 Microsoft Corporation. All rights reserved. [Terms of Use](#)."

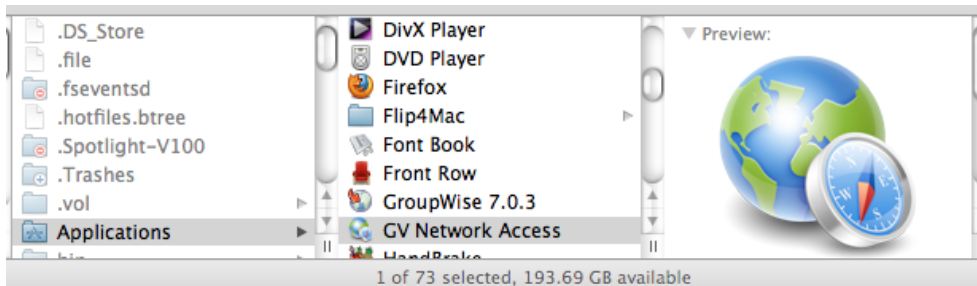
This is where you will see your private drive and your departmental data drive. You can simply click on the folders to see what is in them and for uploading and downloading, you would use the menu bar at the top of the webpage.



VPN Access with a GVSU owned laptop, from home

GVSU owned laptops can access their private drives and departmental data drives the same as the instructions for non-GVSU owned machines, but there is a built in application that will automount your drives on your desktop.

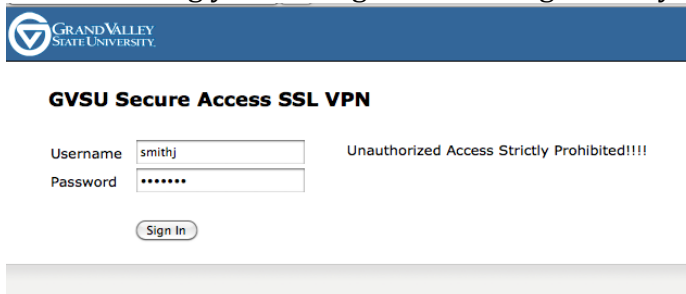
Open Macintosh HD -> Applications and double click the GV Network Access icon.



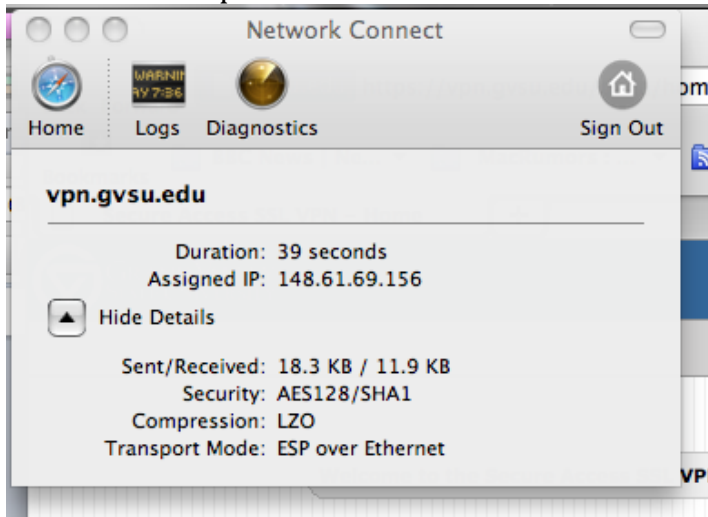
This will start up Network Connect. If you have never connected to vpn.gvsu.edu, you will need to enter that location in, at the address bar and hit Enter:



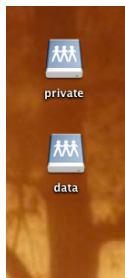
This will bring you to a login screen. Login with your network ID and password.



This will start up a secure session with GV



Once you have successfully connected, your private drive and departmental data drive will show up on your desktop.



When you are done, drag these to the trash to eject them and go to Network Connect and select Sign Out.

